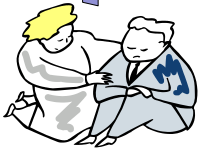


Do you look after
or care for
a relative or friend?



Or

Do you have someone care for you?

Then help and support is available

This leaflet will provide the contact details
and information on how
to access the services you may need



Please tell Reception
if you are a carer





Thornaby & Barwick Medical Group

The Doctor's and staff are fully supportive of patients and where needed, their carers

In order to support patients and /or their carers, this leaflet has been developed to provide contact and support information. The services identified can be accessed using the contact details provided.

- **First Contact (in hours)** **First Contact (out of hours)**
01642 527764 01642 524552
- **Health and Social Care**
Alma Street, Stockton on Tees. Tel 01642 393339
- **Citizens Advice**
Bath Lane Stockton. Tel: 01642 633877
- **Department of Works and Pensions, Tees Buildings**
10-16 Bridge Road, Stockton Tel: 0845 604 3719
- **Social Services Access unit**
Bath Lane, Stockton on Tees Tel; 01642 415030
- **Social Services Emergency Duty Team**
(Out of Hours office) Tel: 08702 402994
- **The Avalon Group**
www.avalongroup.org.uk Tel: 01642 633556
- **Representational Advocacy Service**
Tel: 01642 649700



Part A

Please complete this section and pass to our reception staff so that you are registered, or can nominate someone as a carer.

Name of patient

Address

.....Telephone number

Details of care needs

.....

Name of Carer

Address

.....Telephone number

If you would like to have a 'Carer's Assessment', please contact the 1st Contact Unit, Social Services on telephone:

Stockton (01642) 527764

Part B For Practice Use

*Please pass to TMC Admin staff for:
referral, scanning and data entry using read codes Ub1ju for Carer's
and 9180. for patients records*

Referral to Social Services sent:...../...../.....

By:

Data recorded by:

Date:/...../.....